

HONDA

HONDA
The Power of Dreams

Marine

2014 Range




PEQ-BROCH-MA0913

Honda (UK)

470 London Road, Slough, Berkshire, SL3 8QY.
Telephone: 0845 200 8000*
www.honda.co.uk

A division of Honda Motor Europe Ltd.
*Charged at local rates from landlines.

These specification details do not apply to any particular product which is supplied or offered for sale. The manufacturer reserves the right to vary their specification, including colours, with or without notice at such times in such manner as they think fit. Major as well as minor changes may be involved. Every effort, however, is made to ensure the accuracy of the particulars contained in this brochure. Consult the Dealer with whom your order is placed for details of the specification of any particular product. This publication shall not constitute in any circumstances whatsoever an offer by the Company to any person. All sales are made by the Distributor or Dealer concerned subject to and with the benefit of the standard Conditions of Sale and Warranty given by the Distributor.

 Honda sources paper responsibly from manufacturers within the EU.
Please don't bin me. Pass me on to a friend or recycle me.

HONDA
MARINE

Useful Innovation

Soichiro Honda once said "We only have one future and it will be made of our dreams, if we have the courage to challenge convention". Since 1948, when the Honda Motor Corporation was formed, we have lived by this philosophy. Always challenging the status quo, always asking questions, always learning. Endeavouring to make the impossible possible. And big dreams produced a massive future. Today, Honda produces innovative and reliable products for almost every application – from lawnmowers to corporate jets. With every product designed to make life more joyful for you and less impactful to the planet. Where will our dreams take us next?



FCX Clarity

What if we could build a car with zero emissions? For more than two decades, our engineers have looked for ways to challenge conventional thinking on how to make cars. Powered by an electric motor, the FCX Clarity emits no CO₂. Since we unveiled our first fuel cell vehicle in 1999, we've brought the innovative FCX right from the lab to the fleet and now, to the public.



HondaJet

Why can't planes be made cheaper, more fuel efficient and create less emissions? At Honda we believe in stretching the bounds of human mobility whether it's on the road, on the track or in the sky. So, in 1997, a thought became a sketch. Instead of putting the engines below the wing, as on standard aircraft, we put them above it. In 2000, HondaJet's progress was such that a new research facility was established exclusively for its development. Today HondaJet is aloft. With its all-composite fuselage, it is lighter, quieter, more fuel efficient and emits as little as 40% of the pollutants of comparable aircraft.



Motorcycles

Wouldn't motorcycles be better if designers focused on the rider rather than the machine? For example, instead of thinking "How can we improve the brakes?" Honda ask "How can a braking system compensate for a rider's panic-driven reactions in an emergency without affecting normal braking feel?" We use this process to create machines that not only win Moto GPs but also perform perfectly on the daily commute. What's more, all the knowledge is shared, from 1800cc Grand Tourers like the Goldwing to 50cc Scooters like the Vision 50.



Robotic Lawnmower

As one of the world leaders in lawnmower technology and advanced robotics, doesn't it make sense that our first commercial robotic product is a lawn mower? Miimo, is designed to fit right into your life – and make it better. This capable robot works around your family schedule, taking care of your lawn so you can focus on the more important things in life.

Minimum output from you means maximum output from Miimo, with automatic recharging and durable blades to keep it going for even longer. What's more, Miimo cuts down garden waste and improves the health of your lawn by recycling the grass shavings back into the ground.



BLUE SKIES FOR OUR CHILDREN

Blue Skies For our Children

Ever wished for a world where our children can enjoy a free and sustainable future? At Honda, this vision is nothing new for us. As pioneers of environmental technologies, our engineers have been exploring ways to make it happen for the past 40 years.

Today, sustainability is still top of our agenda. In June 2011, we pledged to cut CO₂ emissions from all our global products, equipment and corporate activities by 30% by the end of 2020 compared to 2000 levels. We're also firmly committed to powering our vehicles with innovative renewable technologies wherever we can.



ASIMO

What if we could create products that can help with important tasks like assisting the elderly or a person confined to a wheelchair? Or perform tasks that are dangerous to humans, such as fighting fires or cleaning up toxic spills? Back in 1986, our engineers made this dream a reality when they created ASIMO: the world's most advanced humanoid robot. ASIMO cleverly recreates human motion to walk and run on slopes and uneven surfaces. It can make smooth turns, climb stairs and pick up objects. ASIMO can even respond to simple voice commands and recognise the faces of a select group of individuals. And using its camera eyes, ASIMO can even skilfully map its environment to navigate around stationary and moving objects.

CONTENTS

Useful Innovation **01**

Outboard range **03**



HONDA TECHNOLOGY	03
BF250	05
BF175 / BF200 / BF225	07
BF115 / BF135 / BF150	09
BF80 / BF100	11
BF60 / BFP60	13
BF40 / BF50	15
BF30	17
BF15 / BF20	19
BF8 / BF10	21
BF2.3 / BF5	23
MARINE OIL	25
ACCESSORIES	26
RIGGING COMPONENTS	27
AUTHORISED DEALER NETWORK	28
TECHNICAL SPECIFICATIONS	29

Honwave **33**



HONWAVE INFLATABLE RANGE	33
TECHNICAL SPECIFICATIONS	35

The World of Honda Power Equipment **37**

PEACE OF MIND

Honda provides a warranty which does not weaken or deteriorate with age. Every Honda Marine outboard engine customer is supported by an industry leading 6 year domestic or 2 year commercial warranty.* The Honda warranty maintains the same value throughout its lifetime, ensuring the last day of cover is exactly the same as the first; peace of mind for all Honda outboard owners.



Domestic Use



Professional Use

*Subject to following the service schedule

HONDA : THE PIONEER OF 4-STROKE OUTBOARD TECHNOLOGY

PGM-FI

Honda's renowned Programmed Fuel Injection, controlled by a highly advanced ECU (Engine Control Unit) and engine sensors, precisely controls the supply of fuel to the engine. Easy starting, instantaneous throttle response and superior fuel economy is assured (BF40 – BF250).

Programmed Fuel Injection

VARIABLE VALVE TIMING AND LIFT ELECTRONIC CONTROL

Developed for its high performance engines, Honda's Variable Valve Timing and Electronic Control (VTEC™) varies the lift and duration of the intake valves to provide optimum performance both at low rpm and at high rpm. VTEC™ delivers smooth stable idling at low speeds, while increasing valve lift at higher speeds which broadens the torque curve and top end power (BF100, BF150, BF225 and BF250).



BOOSTED LOW SPEED TORQUE

Honda's revolutionary BLAST™ (air/fuel ratio and ignition-timing) technology boosts engine torque at low rpm under rapid acceleration conditions. This contributes to strong hole shot performance, getting the hull up on the plane more quickly (BF40–BF250).

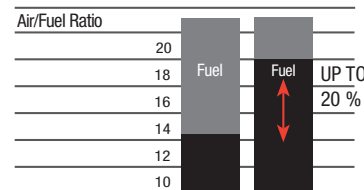


ECONOMY CONTROLLED MOTOR

Honda's proprietary lean burn control technology ECOMo, permits combustion to operate on a leaner air/fuel ratio than stoichiometric standard. Sensors precisely measure the air/fuel mixture ensuring best fuel economy in cruising mode (BF40–BF250).



MORE POWER - GREATER FUEL ECONOMY



DRIVE BY WIRE

Honda's digitally controlled Drive By Wire (DBW) engine control system provides smooth throttle and gear shifting under all operating conditions. The system has been designed to include advanced features; synchronised trim/throttle control, trolling mode and a warning and alert function. (From Spring 2014: BF175 / BF200 / BF225 / BF250).



NMEA2000® COMPLIANCE

All Honda outboards BF40–BF250 are NMEA2000® compliant, allowing simplified connectivity with other NMEA2000® electronic equipment such as fishfinders, chartplotters and sonar devices via CANbus network technology (BF40–BF250).

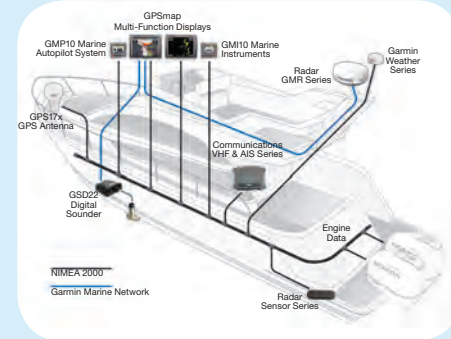


Image supplied by Garmin

MULTI-FUNCTION GAUGES

Honda's new NMEA2000® compliant multi function gauges have been designed to ensure simplified connection on board and provide comprehensive information for users. These new gauges feature Honda's unique Eco light which indicates ECOMo mode in operation (BF40–BF250).



TROLLING CONTROL

Trolling Control provides precise slow speed control for boat users, making it ideal for fishing and slow speed manoeuvres. Available on selected Honda outboards, engine speed can be controlled in increments of 50rpm from idle speed to 1000rpm/1100rpm (model dependant). A Trolling Control switch required to activate this feature is available through your Honda Authorised Dealer as an optional accessory (BF40–BF150).

HONDA'S EXCLUSIVE CORROSION PROTECTION



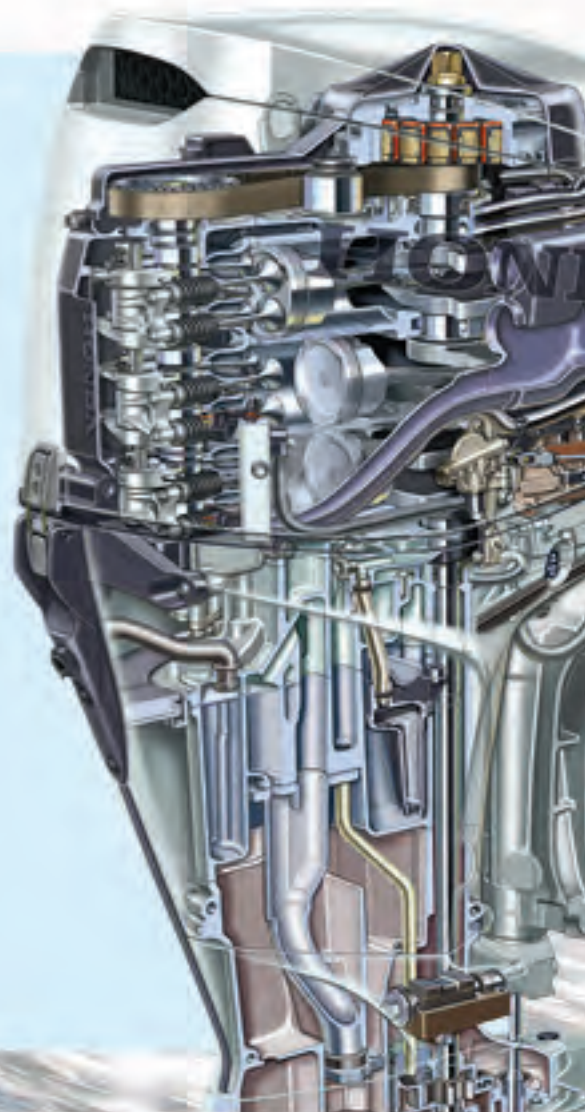
Every Honda engine undergoes a vigorous four stage coating process for protection against harsh conditions such as ultraviolet rays and extensive saltwater exposure. First, the double sealed anodising treatment is applied to the aluminium alloy base, followed by the epoxy primer undercoat, the acrylic aqua marine silver paint and, finally, the acrylic resin topcoat. With Honda, complete durability means innovation at every level.

ENGINE PROTECTION AND SECURITY



Honda Outboard alert systems monitor critical engine functions including engine temperature, oil pressure, fuel injection and charging, and will alert the boat user to abnormal operating conditions. An audible buzzer and warning light will be activated if a fault is detected. (BF40–BF250).

On non PGM-FI outboards (remote control models), the alert system will monitor engine temperature and oil pressure (BF8–BF30).



1964 THE FUTURE IS IN 4-STROKE

BF250

A STANDARD FOR PERFORMANCE AND CONSUMPTION

With a unique synergy of automotive and marine engine technologies, the BF250 is the embodiment of Honda's passion for engineering and technical excellence, making it truly worthy of flagship model status. With a striking hood design incorporating a unique Power Intake Air System and a 3.6L V6 motor, the BF250 is ready to provide the ultimate on-water experience.



DESIGN WITH POWER

With its V6 3.6L VTEC™ motor, the BF250 sets new standards in the 250hp category thanks to its class leading top end performance and superior levels of fuel efficiency. The BF250 features a striking hood design to incorporate Honda's unique Power Intake Air System, an industry first. The Power Intake Air System, in combination with BLAST™ and ECOmo technologies, creates a motor with a unique blend of power and economy.

Shift Load Control reduces operator gear shift effort and provides smoother gear changing. When shifting from forward, reverse and neutral the ECU analyses engine speed and throttle position and, in turn, changes the ignition timing, modifying engine torque.

ADVANCED TECHNOLOGY AND SPECIAL FEATURES

LARGE DISPLACEMENT V6

A 60°, V6, 3.6L powerful, compact, 24-valve SOHC design, ensures superior performance, reliability and durability based on Honda's historical engineering excellence. This narrow engine concept allows for simplified installation, particularly in multiple engine installation packages.

RACING TECHNOLOGY VTEC™

VTEC™ delivers more power, torque and efficiency at every speed. At 4500rpm, VTEC™ engages a special high lift cam profile to provide more air (through increased valve opening) into the combustion chamber, resulting in more engine power. To further enhance engine performance, in conjunction with VTEC™, VAIS (Variable Air Intake System) works to produce a longer, flatter torque profile; the ultimate in fine-tuned performance.

POWER INTAKE AIR SYSTEM

This dynamic design feature on the BF250 allows external air to be drawn directly into the engine, preventing increased air temperature associated with some conventional air intake systems. This subsequently develops more engine power.



GEAR CASE

A highly efficient hydrodynamic gear case design greatly enhances underwater efficiency and results in less under water drag. With a 2:1 gear ratio the propeller and engine combination provide powerful thrust and propeller grip, providing high levels of all round performance.



SHIFT LOAD CONTROL

Shift Load Control reduces operator gear shift effort and provides smoother gear changing.

When shifting from forward or reverse into neutral, the ECU analyses engine speed and throttle position and in turn changes the ignition timing, modifying engine torque.

AUTOMATIC IDLE CHARGE

The BF250 is equipped with an Automatic Idle Charge system that enables the engine to meet today's increasing demand to support on board electronic equipment.

At idle speed, if the electrical demand increases, the ECU detects this and increases the engine rpm. This results in the alternator producing a higher output.

BOOSTED LOW SPEED TORQUE



Honda's BLAST™ technology advances ignition timing in such a manner that it develops more torque at low rpm, enabling the hull to get on the plane more quickly.

Hole shot and acceleration is significantly improved by ignition advance for best torque (MBT) trace control.

This patented technology pioneers a new age in 4-stroke outboard engines and is the benchmark for Honda engine designs.

LEAN BURN CONTROL

Inclusion of lean burn control offers significantly improved fuel consumption in cruising mode versus comparable 4-strokes and reduced running costs for boat users.

DRIVE BY WIRE

Honda's digitally controlled Drive By Wire (DBW) engine control system provides smooth throttle and gear shifting under all operating conditions. DBW is an optional feature. [Available from Spring 2014. Please consult with your Honda Authorised Dealer].

NMEA2000® COMPLIANT

NMEA2000® compliance allows engine connectivity to other compliant devices such as chart plotters, and fishfinders. Engine data such as rpm, temperature, fuel usage and other data can be easily displayed on the screen of the device.

MULTI-FUNCTION GAUGES

Honda NMEA2000® compliant multi-function gauges, Garmin GMI10 and GPS MAP devices all include Honda's unique Eco light. This indicates ECOmo mode in operation.

BF175/BF200/BF225

ABSOLUTE POWER

Honda's BF175, BF200 and BF225, with powerful large-displacement 3.5L V6 engines, provide boaters with the most technologically advanced outboard power available. Based on the proven technology found in Honda's automotive engines and incorporating exclusive marine technologies, these revolutionary, high performance outboards deliver superior torque, top-end speed and overall world-class reliability and durability in a narrow, balanced 60° 'V' profile powerplant.



MAXIMUM POWER

Packed with power, the BF175, BF200 and BF225 incorporate Honda's unique BLAST™ and ECOmo technologies which contribute to provide powerful acceleration together with outstanding fuel economy during cruising.

The BF225 is equipped with VTEC™ a high performance engine technology originally a development of Honda Racing.

VTEC™ varies the lift and duration of intake valves to provide optimum performance both at low and high engine rpm.

A high performance gear case design reduces underwater drag and further contributes to the V6 engine series' impressive acceleration and top-end performance.

SHIFT LOAD CONTROL

BF175/BF200/BF225 feature Honda's Shift Load Control system which reduces operator gear shift effort providing smoother gear changing. When shifting from forward or reverse into neutral, the ECU will analyse the engine speed, throttle position and in turn changes the ignition timing, modifying engine torque.

AUTOMATIC IDLE CHARGE

The BF175/BF200/BF225 are equipped with an Automatic Idle Charge system that enables the engine to meet increasing demands to support the on board electronic equipment. At idle speed, if the electrical demand increases, the ECU detects this and increases the engine rpm. This results in the alternator producing a higher output.

ADVANCED TECHNOLOGY AND SPECIAL FEATURES

LARGE DISPLACEMENT V6

A 60° V6 3.5L powerful, compact 24-valve SOHC design. Lacking the bulk and weight of long intake runners and multi-camshafts, the narrow V6 design ensures superior performance and durability based on Honda's automotive engineering excellence.

RACING TECHNOLOGY

VTEC™ delivers more power, torque and efficiency at every speed.

At 4500rpm, a special high-lift cam engages to provide more air (increased valve opening) into the combustion chamber to produce more power.

VTEC™ and Dual Stage Induction work to produce a longer, flatter torque profile: the ultimate in fine-tuned performance [VTEC™ available on BF225 only].

BOOSTED LOW SPEED TORQUE



Hole shot and acceleration is significantly improved by MBT trace control (ignition timing). MBT – Minimum advance for Best Torque.

Advanced ignition timing develops more torque at low rpm to get the hull up on the plane quicker. Super-strong acceleration with rapid advancement of the throttle.

This patented technology pioneers a new age in 4-stroke outboard engines and is the benchmark for Honda engine designs.

LEAN BURN CONTROL

Inclusion of lean burn control offers further improved consumption in cruising mode versus comparable 4-strokes and reduced running costs for boat users.

DRIVE BY WIRE

Honda's digitally controlled Drive By Wire (DBW) engine control system provides smooth throttle and gear shifting under all operating conditions. DBW is an optional feature. [Available from Spring 2014. Please consult with your Honda Authorised Dealer].

NMEA2000® COMPLIANT

NMEA2000® compliance allows engine connectivity to other compliant devices such as chart plotters and fishfinders. Engine data such as rpm, temperature, fuel usage and other data can be easily displayed on the screen of the device.

MULTI-FUNCTION GAUGES

Honda NMEA2000® multi-function gauges, Garmin GMI10 and GPS MAP devices all include Honda's unique Eco light. This indicates ECOmo mode in operation.

FEATURES

- 'On Demand' 60amp, belt-driven alternator reduces heat build-up and provides superior battery charging capability – 48amp at trolling speed.
- 4-Front Corrosion Protection. A patented, 'double-sealed' multi-layered paint process. Sacrificial anodes and stainless steel technology, along with waterproof connectors, all enhance corrosion protection.



BF115/BF135/BF150

TECHNOLOGY THAT DELIVERS

Honda's BF115, BF135 and BF150 deliver world-renowned quality and reliability through advanced engineering. Achieving unparalleled levels of performance these engines set the standard in innovation, featuring advanced inline four-cylinder technology, drawn from Honda's decades of automotive experience. These engines feature a range of Honda-exclusive technologies that place them in a league of their own.



CUTTING-EDGE ADVANTAGES

Honda's BF115, BF135 and BF150 deliver seamless performance and optimum power for a smooth and enjoyable boating experience. Using proven technology found in Honda's automotive engines, the BF115, BF135 and BF150 have been manufactured with the world's most innovative, efficient and reliable technology. Designed for use in all environments, these engines feature a unique set of Honda-exclusive technologies to provide increased power across the entire rpm range. Low fuel consumption, exceptional reliability and reduced periodical maintenance requirements all combine to minimise the overall cost of ownership.

MAXIMUM POWER

The BF150 features Variable Valve Timing and Lift Electronic Control (VTEC™) developed for Honda's high-performance sports cars. Introduced in the early 1990s, VTEC™ is the benchmark technology used on every Honda motor vehicle sold today. The system ensures smooth, stable idling, while increased valve lift at high rpm broadens the torque curve and provides incredible top-end power.

ADVANCED TECHNOLOGY AND SPECIAL FEATURES

RACING TECHNOLOGY



VTEC™ delivers more power, torque and efficiency at every speed.

At 4500rpm, a special high-lift cam engages to provide more air (increased valve opening) into the combustion chamber to produce more power.

VTEC™ and Dual Stage Induction work to produce a longer, flatter torque profile: the ultimate in fine-tuned performance [VTEC™ available on BF150 only].

BOOSTED LOW SPEED TORQUE



Hole shot and acceleration is significantly improved by accurate ignition timing thanks to MBT (Minimum advance for Best Torque) trace control.

Advanced ignition timing develops more torque at low rpm to get the hull up on the plane quicker. Super-strong acceleration with rapid advancement of the throttle.

This patented technology pioneers a new age in 4-stroke outboard engines and is the benchmark for Honda engine designs.

LEAN BURN CONTROL



Inclusion of lean burn control offers significantly improved fuel consumption in cruising mode versus comparable 4-strokes and reduced running costs for boat users.

NMEA2000® COMPLIANT



NMEA2000® compliance allows engine connectivity to other compliant devices such as chart plotters and fishfinders. Engine data such as rpm, temperature, fuel usage and other data can be easily displayed on the screen of the device.

MULTI-FUNCTION GAUGES

Honda NMEA2000® multi-function gauges, Garmin GMI10 and GPS MAP devices all include Honda's unique Eco light. This indicates ECOmo mode in operation.

TROLLING CONTROL

Trolling Control allows slow speed control with adjustments in 50rpm increments between 650-900rpm. Trolling Control is an optional feature on BF115/BF135/BF150. Please contact your Honda Authorised Dealer for further information.

FEATURES

- Three-Way Cooling. Three separate cooling circuits for more power with long-term durability.
- 4-Front Corrosion Protection. A patented, 'double-sealed' multi-layered paint process. Sacrificial anodes and stainless steel technology, along with waterproof connectors, all enhance corrosion protection.
- 'On Demand' 40amp, belt-driven alternator reduces heat build-up and provides superior battery charging capability – 30amp at 1000rpm and 40amp at 2000rpm.



BF80/BF100

PERFECT PARTNERS

With their compact design, light weight and unique Honda technology, the BF80 and BF100 have been designed to assure you of the highest levels of efficiency and reliability - meaning maximum quality time and on-water adventures for you.



ADVANCED TECHNOLOGY AND SPECIAL FEATURES

A PARTNERSHIP OF POWER AND INNOVATION

With a powerful 1.5L, Single Over Head Cam shaft (SOHC), 16-valve, inline four-cylinder engine, the BF80/BF100 are ready to set new levels of performance in the 80 to 100 horsepower sector. A perfect blend of Honda's world renowned marine and automotive technologies, together with a lightweight and compact design, is assured to make these engines a firm favourite with boating enthusiasts.

ECOMO, PGM-FI, BLAST™, and VTEC™ (BF100 only) combine to ensure a perfect blend of power and fuel economy throughout the engine operating range.

With NMEA2000® connectivity, BF80 and BF100 are simple to connect with other popular compliant equipment, such as chart plotters or fishfinders.

Trolling control between 650–1000 rpm provides accurate slow speed control, ideal for fishing or marina manoeuvring.

BLAST™ OFF

Exceptional hole shot performance is achieved through a combination of Honda's PGM-FI (Multi-port Programmed Fuel Injection), it's unique BLAST™ system and a high-performance gear case design featuring 2.33:1 ratio.

With fuel to each of the four cylinders and ignition timing across the entire rpm range accurately controlled, optimum on-water performance is assured.

RACING TECHNOLOGY



VTEC™ delivers more power, torque and efficiency at every speed.

At 5200rpm, a high-lift cam engages to provide more air (increased valve opening) into the combustion chamber to produce more power.

VTEC™ works to produce a longer, flatter torque profile: the ultimate in fine-tuned performance [VTEC™ available on BF100 only].

BOOSTED LOW SPEED TORQUE



Hole shot and acceleration is significantly improved by accurate ignition timing thanks to MBT (Minimum advance for Best Torque) trace control.

Advanced ignition timing develops more torque at low rpm to get the hull up on the plane quicker. Super-strong acceleration with rapid advancement of the throttle.

This patented technology pioneers a new age in 4-stroke outboard engines and is the benchmark for Honda engine designs.

LEAN BURN CONTROL



Adjusts the air/fuel mix according to speed and load to maximise efficiency.

Inclusion of lean burn control offers significantly improved fuel consumption in cruising mode versus comparable 4-strokes and reduced running costs for boat users.

NMEA2000® COMPLIANT



NMEA2000® compliance allows engine connectivity to other compliant devices such as chart plotters and fishfinders. Engine data such as rpm, temperature, fuel usage and other data can be easily displayed on the screen of the device.

MULTI-FUNCTION GAUGES

Honda NMEA2000® multi-function gauges, Garmin GMI10 and GPS MAP devices all include Honda's unique Eco light. This indicates ECOMO mode in operation.

TROLLING CONTROL

Trolling Control allows slow speed control with adjustments in 50rpm increments between 650-1000 rpm. Trolling Control is an optional feature on BF80/BF100. Please contact your Honda Authorised Dealer for further information.

FEATURES

- Powerful 1.5L, SOHC, 16-valve, inline four-cylinder engine.
- A maintenance reminder is controlled by the engine ECU (Engine Control Unit). When a maintenance interval is reached, a 'wrench' symbol will appear on the Honda NMEA2000® multi-function gauges to inform the user it is ready for its next service.



BF60/BFP60

ECONOMY YOU CAN COUNT ON

The BF60 and BFP60 outboard engines, with their different gear case options, combine exclusive Honda technology in a lightweight package.



POWERFUL AND LIGHTWEIGHT

Weighing 110kg* the 998cm³ three-cylinder engine incorporates electronic fuel injection, Honda's unique BLAST™ air/fuel ratio and ignition-timing technology and lean burn control, ECOmo, to deliver easy start-up and acceleration together with outstanding fuel economy during cruising.

A high-performance gear case design further contributes to the BF60's impressive acceleration and top-end speed.

POWER THRUST (BFP60)

The BFP60 uses the high performance gear casing from the BF80/BF100 which features a larger diameter propeller and a 2.33:1 ratio. The gear case shape has been configured to optimise BFP60 performance and low speed handling.



*BFP60 119kg

BOOSTED LOW SPEED TORQUE



Hole shot and acceleration is significantly improved by accurate ignition timing thanks to MBT (Minimum advance for Best Torque) trace control.

Advanced ignition timing develops more torque at low rpm to get the hull up on the plane quicker. Super-strong acceleration with rapid advancement of the throttle.

This patented technology pioneers a new age in 4-stroke outboard engines and is the benchmark for Honda engine designs.

ADVANCED TECHNOLOGY AND SPECIAL FEATURES

LEAN BURN CONTROL

Adjusts the air/fuel mix according to speed and load to maximise efficiency.

Inclusion of lean burn control offers significantly improved fuel consumption in cruising mode versus comparable 4-strokes and reduced running costs for boat users.

NMEA2000® COMPLIANT

NMEA2000® compliance allows engine connectivity to other compliant devices Engine data such as rpm, temperature, fuel usage and other data can be easily displayed on the screen of the device.

MULTI-FUNCTION GAUGES

Honda NMEA2000® multi-function gauges, Garmin GMI10 and GPS MAP devices all include Honda's unique Eco light. This indicates Lean Burn mode in operation.

TROLLING CONTROL

A low speed variable trolling control function is available for BF60 and BFP60. With this useful feature, the operator can make fine speed adjustments in increments of 50rpm (between 750rpm and 1000rpm) via a single switch operation.

Remote control types: Optional equipment. Tiller handle Type: Standard equipment.

MULTI-FUNCTION TILLER OPTION



Available as an option, the multi-function tiller handle for the BF60/BFP60 incorporates a power trim-tilt switch in the throttle grip, so the operator can trim the engine while underway with clear focus on the water surroundings.

An integrated engine alert panel provides both visual and audible alerts including oil pressure, overheating, engine management and battery charging to ensure peace of mind during on-water trips.

Other tiller handle functions include handle height adjustment, throttle friction adjustment and tool-less steering grip friction adjustment.

The tiller handle also has a reversible shift lever, which can be mounted on the left or right side.

FEATURES

- Powerful 17amp multi-pole AC generator (22amp on BFP60 Power Thrust model).
- 4-Front Corrosion Protection. A patented, 'double-sealed' multi-layered paint process. Sacrificial anodes and stainless steel technology, along with waterproof connectors, all enhance corrosion protection.



BF40/BF50

ULTIMATE PERFORMANCE

Since their introduction and continued evolution the BF40 and BF50 have become the most technologically advanced, lightweight 4-stroke outboard engines in the Honda range.



COMPACT INNOVATION

The BF40 and BF50 outboard engines retain their class leading, lightweight and compact form. Both motors are now equipped with PGM-FI electronic fuel injection, Honda's unique Boosted Low Speed Torque (BLAST™) air/fuel ratio and ignition timing technology, lean burn control (ECOMO) to deliver powerful start up and acceleration together with outstanding fuel economy during cruising.

MULTI-FUNCTION TILLER OPTION



A multi-function tiller handle is available as an optional accessory for the BF40/BF50 incorporating an integrated engine alert panel.

This provides both visual and audible alerts to include oil pressure, overheating, engine management and battery charging to ensure peace of mind during on-water trips. Other tiller handle functions include Power Trim Tilt Control (selected models), handle height adjustment, throttle friction adjustment and tool-less steering grip friction adjustment. The tiller handle also features a reversible shift lever, which can be mounted on the left or right side.

LIGHTWEIGHT

A reduction gear is employed to achieve compact engine layout by offsetting the in-line three-cylinder engine forward, while a long-branch plastic inlet manifold and miniaturised electronic components further contribute to the class-topping lightweight, compact design.

ADVANCED TECHNOLOGY AND SPECIAL FEATURES

ULTIMATE PERFORMANCE



BLAST™ technology combined with a highly efficient gear case design, contributes to excellent levels of acceleration and top end performance.

Hole shot and acceleration is significantly improved by accurate ignition timing thanks to MBT (Minimum advance for Best Torque) trace control.

Advanced ignition timing develops more torque at low rpm to get the hull up on the plane quicker.

This patented technology pioneers a new age in 4-stroke outboard engines and is the benchmark for Honda engine designs.

LEAN BURN CONTROL ECOMO



Adjusts the air/fuel mix according to speed and load to maximise efficiency.

Inclusion of lean burn control offers significantly improved fuel consumption in cruising mode versus comparable 4-strokes and reduced running costs for boat users.

NMEA2000® COMPLIANT



NMEA2000® compliance allows engine connectivity to other compliant devices such as chart plotters and fishfinders. Engine data such as rpm, temperature, fuel usage and other data can be easily displayed on the screen of the device.

MULTI-FUNCTION GAUGES

Honda NMEA2000® multi-function gauges, Garmin GMI10 and GPS MAP devices all include Honda's unique Eco light. This indicates ECOMO mode in operation.

TROLLING CONTROL

Trolling Control allows slow speed control with adjustments in 50rpm increments between 800-1100rpm. Trolling Control is an optional feature on BF40/BF50. Please contact your Honda Authorised Dealer for further information.

FEATURES

- A highly efficient hydrodynamic gear case reduces underwater drag and increases overall performance, speed and fuel economy.
- Lightest 50hp outboard engine.
- BF40/BF50 available in remote and tiller handle mode.
- Improved low end torque through long tube air intake system (Mikuni® intake system).
- Equipped with a 4 light (visual) and buzzer (audible) alert system for added owner security.
- A removable inspection cap simplifies anode inspection and replacement for ease of maintenance.



BF30

THE QUIET ACHIEVER

Honda's BF30 is equipped with a host of innovative features and fuel efficiency that will pay for itself. With ample power and exceptional torque through the mid range, boating has never been easier.



VERSATILITY AND POWER

The BF30 is a compact and lightweight powerplant that combines Honda's world-renowned reliability with instant throttle response and extraordinarily smooth, stable and quiet operation. This engine incorporates a number of user-friendly features that enable maximum on-water enjoyment, whether trolling in the shallows or motoring across open water.

A BREATH OF FRESH AIR

As 4-stroke engines run on unleaded petrol, there's no need to mix oil and petrol. As a result, even at idle there's no need to worry about unpleasant fumes that are common to 2-stroke engines.

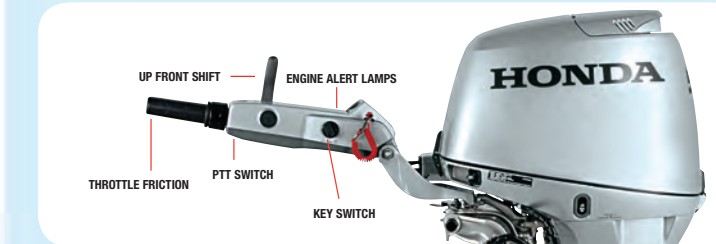
CRUISE WITH CONFIDENCE

This model integrates a number of innovative features including auto start enrichment, Programmed Ignition (PGM-IG), engine alert system, power trim and tilt, non-linear mounting and an optional centre mount tiller. With such functional and reliable features, boating has never been easier. The BF30 is available in both remote control and tiller steer configurations for use in a wide range of boating applications.

ADVANCED TECHNOLOGY AND SPECIAL FEATURES

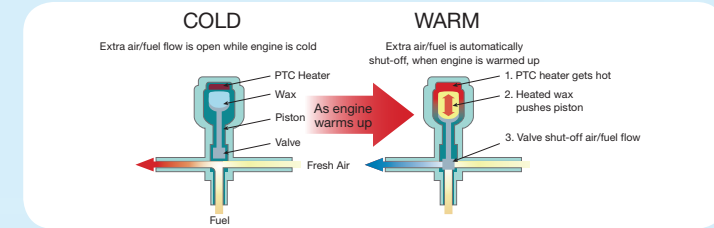
CENTRE MOUNT TILLER

- Ergonomically designed for exceptionally comfortable control
- Handle is 200mm longer and angled 125mm higher
- Remote control models also available



AUTO START ENRICHMENT

The Engine Command Module (ECM) adjusts the air/fuel mixture for quick, easy starting just like fuel injection.



FEATURES

- Better hull manoeuvrability and performance is achieved with power trim and tilt models with a trim range between -4° to +12°.
- A compact 3-cylinder, 3-carburettor 552cc design utilises one carburettor per cylinder. This design is very responsive and with long intake runners and provides high levels of torque particularly in mid range.
- Programmed Ignition (PGM-IG) accurately controls ignition timing during start-up and across the entire rpm range for optimum overall performance.
- 10amp (electric start) alternator ensures battery charge is maintained while operating electronics and other accessories.
- Honda's innovative engine Alert System monitors vital engine functions by alerting the operator in the event of overheating and low oil pressure.
- 4-Front Corrosion Protection. A patented, 'double-sealed' multi-layered paint process. Sacrificial anodes and stainless steel technology, along with waterproof connectors, all enhance corrosion protection.

BF15/BF20

SMOOTH OPERATOR

Honda's BF15 and BF20 deliver unrivalled innovation to the portable range. These engines provide responsive, smooth and reliable power in a lightweight design. Honda's advanced 4-stroke technology results in efficient, clean and quiet operation.



RELIABILITY IN A COMPACT DESIGN

With a high output 350cc displacement and long-stroke design, the BF15 and BF20 are top performers, providing optimal torque at any speed.

Programmed Ignition (PGM-IG) also accurately controls ignition timing during start-up and across the entire rpm range for exceptional overall performance.

A 12amp (electric start) alternator also ensures excellent charging power to keep batteries in top condition.

Thanks to their lightweight design and foldaway lifting handle positioned at the exact balance point of each engine, the engines are made easier to transport.

SUPERIOR HANDLING POWER

The BF20 is available with Power Tilt (selected models only) – perfect for effortless engine tilt operations and shallow-water running.

Cruising is improved and more comfortable with Honda's unique pendulum-motion mounting system. This system, featured in both the BF15 and BF20 is specially designed to minimise engine vibration and maximise user comfort.

A convenient Forward Mount Shift Lever allows fingertip shifting, while a Twist Grip Throttle and Tensioner ensures superior throttle friction, minimising driver fatigue.

ADVANCED TECHNOLOGY AND SPECIAL FEATURES

4 BLADE PROPELLER

All BF15/BF20 models are supplied as standard with 4 blade aluminium propellers, a unique Honda feature. These highly efficient propellers maximise slow to mid range power characteristics, provide increased levels of performance as well as ensuring smooth engine running.

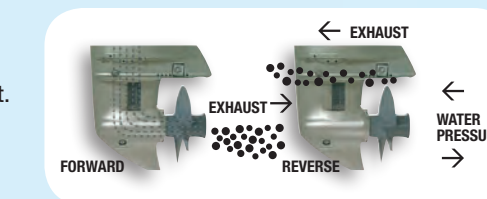
POWER THRUST OPTION (4 BLADE)



A Power Thrust propeller is also available for BF15/BF20. This propeller has been matched to ensure the BF15/BF20 can be installed on and be more suited for use on heavier, slower moving displacement type craft.

REVERSE EXHAUST RELIEF

Exhaust gases are diverted away from the propeller while in reverse, allowing the propeller to run in clean water.



FEATURES

- The BF15 and BF20 are available in many model variations, to include tiller or remote, manual or electric start and Power Tilt options.
- Convenient foldaway lifting handle positioned at the exact balance point of each engine makes it easy to carry the outboard in a level position.
- Programmed Ignition (PGM-IG) accurately controls ignition timing across the entire rpm range for optimum overall operation.
- High Output Charging – 12 amp (electric start) and 6 amp (manual start) outlets maintain battery charge and keep electronics powered, even at trolling speed.
- An automatic decompressor on the BF15/BF20 reduces recoil effort and ensures easy starting.
- Convenient forward mount shift lever allows fingertip shifting, while a twist grip throttle and tensioner ensures superior throttle friction, minimising driver fatigue.
- 4-Front corrosion protection. A patented, 'double-sealed' multi-layered paint process. Sacrificial anodes and stainless steel technology, along with waterproof connectors, all enhance corrosion protection.



BF8/BF10

FREEDOM ON THE WATER

Honda's BF8 and BF10 have deserved reputations built on superior reliability and economy. Combining responsive, reliable and economical power in a lightweight package, these engines deliver complete satisfaction. Perfect for use on inflatable boats, ribs and tenders, the BF8 and BF10 are easily transportable thanks to their convenient foldaway carry handles.



COMPACT AND POWERFUL

The BF8 and BF10 have been designed for boaters who want dependable performance in a portable package. Perfectly suited for use with sailboats and inflatables, their lightweight and compact profile make them very easy to transport. A foldaway handle positioned at the exact balance point of each engine makes it easy to carry the outboard in a level position.

ADVANCED PERFORMANCE

As with all Honda outboards, advanced 4-stroke technology means unparalleled easy starting, quiet operation and low emissions. The BF8 and BF10 have very low fuel consumption and maintenance costs, yet still deliver optimum performance and durability, for which Honda is renowned. Programmed Ignition (PGM-IG) also accurately controls ignition timing during start-up and across the entire rpm range for optimum overall operation.

EASY HANDLING

For increased control and reduced steering effort, the BF8 and BF10 feature a large gear shift lever located at the front of the engine. This convenient Forward Mount Shift Lever allows fingertip shifting, while a Twist Grip Throttle and Tensioner ensures superior throttle friction, minimising driver fatigue and enhancing manoeuvrability.



ADVANCED TECHNOLOGY AND SPECIAL FEATURES

4 BLADE PROPELLER

All BF8/BF10 models are supplied as standard with 4 blade aluminium propellers. These highly efficient propellers maximise low to mid range power characteristics and provide increased levels of performance as well as ensuring smooth engine running.

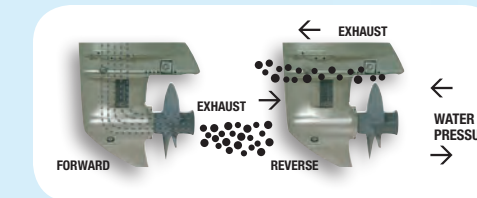
POWER THRUST OPTION (4 BLADE)



A Power Thrust propeller is also available for BF8/BF10. This propeller has been matched to ensure the BF8/BF10 can be installed on and be more suited for use on heavier, slower moving displacement type craft.

REVERSE EXHAUST RELIEF

Exhaust gases are diverted away from the propeller while in reverse, allowing the propeller to run in clean water.



FEATURES

- The BF8/BF10 are available in many model variations including manual start tiller or electric start remote control options.
- One of the lightest 4-stroke engines in its class allows convenient transport and easy mounting to any hull.
- Convenient foldaway handle positioned at the exact balance point of each engine makes it easy to carry the outboard in a level position.
- Programmed Ignition (PGM-IG) accurately controls ignition timing during start-up and across the entire rpm range for optimum overall operation.
- Convenient forward mount shift lever allows fingertip shifting, while a twist grip throttle and tensioner ensures superior throttle friction, minimising driver fatigue.
- High Output Charging – 12 amp (electric start) and 6 amp (manual start) outlets maintain battery charge and keep electronics powered, even at trolling speed.
- 4-Front Corrosion Protection. A patented, 'double-sealed' multi-layered paint process. Sacrificial anodes and stainless steel technology, along with waterproof connectors, all enhance corrosion protection.

BF2.3/BF5

CARE-FREE BOATING

Honda's BF2.3 and BF5 are extremely reliable and quiet. The lightweight design and ergonomic carry handles of these engines makes boating convenient and fun, rather than a hassle. Honda's advanced engineering packs lots of performance into a small package, combining a large number of innovative features in the lightest possible package.



ADVANCED TECHNOLOGY AND SPECIAL FEATURES

PORTABLE POWER

Although these compact engines pack enough punch to push a boat out to sea, they're light enough to be carried back to the car. Thanks to their ergonomic, integrated carry handles, the BF2.3 and BF5 can be taken anywhere. Despite their size, these engines boast all the benefits of Honda's advanced 4-stroke technology, which is second to none. The BF5 features a safety lock-out system that only allows the engine to be started in neutral gear.

EASY AND COST EFFECTIVE TO OPERATE

For increased control and reduced steering effort, the BF2.3 and BF5 each have a Twist Grip Throttle which ensures superior throttle friction and enhances response and manoeuvrability. Just like the rest of Honda's outboard range, these engines are also extremely fuel efficient.

THE RIGHT AMOUNT OF MUSCLE

Boaters can take advantage of higher engine displacement for more low and mid-range power. Even at low rpm, the BF2.3 and BF5 have solid and reliable torque to move heavier crafts than any other engine in their class.



CENTRIFUGAL CLUTCH (BF2.3)

BF2.3 comes standard with a centrifugal clutch. The engine is able to maintain a smooth idle and then upon advancing the throttle it automatically engages the propeller above idle speed. It's like having a neutral position.



FEATURES

- World-renowned Honda 4-stroke quality combines proven reliability and superior fuel efficiency, with no oil mixing.
- Lightweight/compact design. Easy to transport and perfect for small tenders.
- Air cooled technology eliminates water pump necessity and reduces maintenance costs (BF2.3).
- Portability is optimised with a 1L integral fuel tank (BF2.3).
- Twist grip throttle ensures precise throttle control, while the throttle tensioner minimises driver fatigue.
- BF5 only: incorporates a safety lock-out system that permits the engines to be started only in neutral gear.
- BF5 only: Available as an option with a 3 amp charging coil.
- BF5 only: Supplied with a 12L fuel tank, which extends running hours with fewer fuel stops.
- BF2.3 only: 360° rotation allows user to manoeuvre in tight spots with ease.



GENUINE HONDA MARINE OIL

GENUINE HONDA MARINE OIL

A range of modern oils and lubricants have been developed to provide superior levels of engine protection during operation in the harshest of marine environments.

Be assured that these have been tested by Honda's Research and Development division and are certified for use in all Honda Marine engines.

Benefits of using Honda recommended oils and lubricants:

- Superior protection against engine wear at low and high operating temperatures
- Excellent anti-rust performance
- Outstanding engine cleanliness
- Reduced oil/fuel consumption
- Approved by Honda

DESCRIPTION	HONDA PART REFERENCE NO
Honda Marine Oil – API / SJ / 10W30 – 1 litre	08221 999 100HE
Honda Marine Gear Oil - 1 litre	08251 999 101HE
Honda Marine PTT Fluid – 1 litre	08266 999 100HE
Honda Marine Grease	08739 B06 100HE
Honda Marine – Gear case oil pump	08200 9011HE
Honda Marine – Engine oil extractor	07999 ZW7 000AH
DESCRIPTION	HONDA PART REFERENCE NO
Honda 4-stroke synthetic motor oil – API / SL / 5W30 / JASO MA – 0.6 LITRE	08221 777 060HE
Honda 4-stroke synthetic motor oil – API / SL / 5W30 / JASO MA – 1.0 LITRE	08221 777 100HE
Honda 4-stroke synthetic motor oil – API / SL / 5W30 / JASO MA – 4.0 LITRE	08221 777 400HE



DEMAND HONDA GENUINE PARTS, ACCESSORIES AND OILS

When it comes time to service your Honda outboard engine, we would recommend that it is carried out by an Authorised Honda Technician using Honda Genuine Parts, Accessories and Oils. That way, you know you're getting quality maintenance and workmanship.



HONDA MARINE RIGGING COMPONENTS

All Honda rigging components and accessories are manufactured to the highest possible standards, providing you with the confidence and reliability you have come to expect from the world's largest engine manufacturer.

INSTRUMENTATION

Monitor every aspect of your engine with Honda instruments. Whatever your boating requirements, Honda has the instruments to meet them from basic analogue to the latest in digital engine monitoring (available as optional accessories). These include tachometers, trim meters, speedometers, volt meters and hour meters. All Honda instruments are of the highest quality to ensure the most accurate and reliable monitoring.

KEY SWITCH PANELS

Honda also offers key switch panels designed to complement its premium controls. No matter what your boat's dimensions, you can choose from a wide range of electrical harnesses and extension looms.

REMOTE CONTROLS

To get optimum pleasure from your boat and engine, it's essential to feel in complete control at all times. Thanks to Honda's extensive range of remote control designs and styles, you can experience the pure pleasure of operating your boat in total comfort and safety. It makes driving so much more enjoyable, with everything from speed and direction to trim and gear selection comfortably under your control.

FUEL SYSTEMS

Take advantage of Honda's portable secure plastic fuel tanks (12L or 25L capacity), complete with an integrated gauge on top to check the fuel level. They're easy to carry, thanks to a large ergonomic handle, and extremely safe. Their plastic construction means there is no risk of leakage due to corrosion. Honda also provides fuel filters and water separators to be fixed on the fuel line, between the inbuilt fuel tank of the boat and the engine. They prevent condensed water from the fuel tank altering the engine's vital functions – for example, water mixing with air/fuel in the combustion chamber which would result in poor performance and potential engine damage.



HONDA MARINE AUTHORISED DEALER NETWORK

You deserve complete confidence that you've made the right choice, before and long after you've made your purchase.

That's why we appoint our Honda Authorised Dealers with as much care as we build into our products.

FIRST-CLASS DEALER NETWORK AND AFTER SALES SERVICE

Wherever you are in Europe, a Honda Marine Authorised Dealer is close at hand to provide you with the highest level of service and assistance, leaving you free to forget about your engine and focus on fun.

At Honda Marine, offering the highest level of service is just as important to us as our products. With an in-depth knowledge of all Honda 4-stroke outboard technologies, our trained technicians have access to our latest diagnostic system, "Dr. H". This innovative electronic diagnosis tool enables immediate analysis of engine health, which translates into cost effective servicing for owners of Honda's technologically-advanced 4-stroke fuel injected outboards.



As well as allowing Honda's qualified technicians to quickly analyse any abnormalities and address any areas of possible concern, Dr. H also has the ability to accurately assess the engine usage, look for previous alert conditions such as over heating or low oil pressure, and allows technicians to print full service reports for owners.

The development of Dr. H is yet another positive step forward for Honda Dealers, providing increased levels of support to our customers.

HONDA GENUINE PARTS AND ACCESSORIES

Honda produces an extensive range of Honda Genuine Parts and Accessories, as well as specially formulated marine engine oils.

Designed and manufactured to exact specifications, Honda Genuine Parts, Accessories and Oils are the only way to keep your Honda outboard engine operating in peak condition.

When it comes time to service your Honda outboard engine, don't take any chances. Make sure the work is carried out by an Authorised Honda Marine Dealership.

The Honda Authorised Dealer network stock all the general maintenance parts you'll need and if they don't have this in stock when required, Honda's renowned Parts Distribution network will ensure supply through one of its many European Logistics centres.

	BF250††	BF225††	BF200††	BF175	BF150††	BF135††
TYPE	OHC - 6 cylinders - 60° V6 VTEC™ 24 Valve	OHC - 6 cylinders - 60° V6 VTEC™ 24 Valve	OHC - 6 cylinders - 60° V6 24 Valve	OHC - 6 cylinders - 60° V6 24 Valve	DOHC - 4 cylinders VTEC™ 16 Valve	DOHC - 4 cylinders 16 Valve
Displacement (cc)	3,583	3,471	3,471	3,471	2,354	2,354
Bore x Stroke (mm)	89 x 96	89 x 93	89 x 93	89 x 93	87 x 99	87 x 99
Full Throttle RPM Range	5,300 - 6,300	5,000 - 6,000	5,000 - 6,000	5,000 - 6,000	5,000 - 6,000	5,000 - 6,000
Rated Power [kW (PS)]	183.9 (250)	167.8 (225)	149.1 (200)	128.7 (175)	110.3 (150)	99.3 (135)
Cooling System	Water Cooled (with Thermostat)	Water Cooled (with Thermostat)	Water Cooled (with Thermostat)	Water Cooled (with Thermostat)	Water Cooled (with Thermostat)	Water Cooled (with Thermostat)
Fuel Delivery	PGM-FI (Programmed Fuel Injection)	PGM-FI (Programmed Fuel Injection)	PGM-FI (Programmed Fuel Injection)	PGM-FI (Programmed Fuel Injection)	PGM-FI (Programmed Fuel Injection)	PGM-FI (Programmed Fuel Injection)
Ignition System	Electronic PGM-IG	Electronic PGM-IG	Electronic PGM-IG	Electronic PGM-IG	Electronic PGM-IG	Electronic PGM-IG
Starting System	Electric starter	Electric starter	Electric starter	Electric starter	Electric starter	Electric starter
Exhaust System	Propeller boss	Propeller boss	Propeller boss	Propeller boss	Propeller boss	Propeller boss
Gear Ratio	2.00	1.86	1.86	1.86	2.14	2.14
Alternator Output	90A	90A	90A	90A	55A	55A
Battery Charging Capacity	60A	60A	60A	60A	40A	40A
NMEA 2000®	Y	Y	Y	Y	Y	Y
Transom Height (mm)	X:635 / XX:762	L:508 / X:635 / XX:762	X: 635	X: 635	L:508 / X: 635	L: 508 / X: 635
Dry Weight (kg)	X: 284† / XX: 288†	L: 264 / X: 269 / XX: 274	X: 267	X: 267	L: 214 / X: 217	L: 214 / X: 217
Engine Trim and Tilt	Power Trim & Tilt	Power Trim & Tilt	Power Trim & Tilt	Power Trim & Tilt	Power Trim & Tilt	Power Trim & Tilt
Overall L / W / H	920 / 625 / X: 1,887 - XX: 2014	920 / 625 / L: 1,670 – X: 1,800 – XX: 1,925	920 / 625 / X: 1,800	920 / 625 / X: 1,800	845 / 580 / L: 1,665 – X: 1,790	845 / 580 / L: 1,665 – X: 1,790

	BF115	BF100	BF80	BFP60	BF60
TYPE	DOHC - 4 cylinders 16 Valve	OHC - 4 cylinders VTEC™ 16 Valve	OHC - 4 cylinders 16 Valve	OHC in-Line 3 cylinders 12 Valve	OHC in-Line 3 cylinders 12 Valve
Displacement (cc)	2,354	1,496	1,496	998	998
Bore x Stroke (mm)	87 x 99	73 x 89.4	73 x 89.4	73 x 79.5	73 x 79.5
Full Throttle RPM Range	4,500 - 6,000	5,500 - 6,300	5,000 - 6,000	5,000 - 6,000	5,000 - 6,000
Rated Power [kW (PS)]	84.6 (115)	73.6 (100)	58.8 (80)	44.1 (60)	44.1 (60)
Cooling System	Water Cooled (with Thermostat)	Water Cooled (with Thermostat)	Water Cooled (with Thermostat)	Water Cooled (with Thermostat)	Water Cooled (with Thermostat)
Fuel Delivery	PGM-FI (Programmed Fuel Injection)	PGM-FI (Programmed Fuel Injection)	PGM-FI (Programmed Fuel Injection)	PGM-FI (Programmed Fuel Injection)	PGM-FI (Programmed Fuel Injection)
Ignition System	Electronic PGM-IG	Electronic PGM-IG	Electronic PGM-IG	Electronic PGM-IG	Electronic PGM-IG
Starting System	Electric starter	Electric starter	Electric starter	Electric starter	Electric starter
Exhaust System	Propeller boss	Propeller boss	Propeller boss	Propeller boss	Propeller boss
Gear Ratio	2.14	2.33	2.33	2.33	2.07
Alternator Output	55A	44A	44A	22A	22A
Battery Charging Capacity	40A	35A	35A	17A	17A
NMEA 2000®	Y	Y	Y	Y	Y
Transom Height (mm)	L: 508 / X: 635	L: 537 / X: 664	L: 537 / X: 664	L: 531	L: 521
Dry Weight (kg)	L: 214 / X: 217	L: 166** / X: 172**	L: 165** / X: 171**	L: 119**	L: 110**
Engine Trim and Tilt	Power Trim & Tilt	Power Trim & Tilt	Power Trim & Tilt	Power Trim & Tilt	Power Trim & Tilt
Overall L / W / H	845 / 580 / L: 1,665 – X: 1,790	748 / 449 / L: 1,566 – X: 1,693	748 / 449 / L: 1,566 – X: 1,693	792 / 417 / L: 1453 – X: 1580	777 / 417 / L: 1397 – X: 1524

** BF40 –BF100: Weight includes aluminium propeller (3kg).

△ BF115 –BF225: Weight excludes aluminium propeller (3kg).

† BF250: Weight includes stainless steel propeller (6kg).

†† Counter rotation models and twin engine packages are available. See your Honda Marine Authorised Dealer for more details.

Honda outboards are tested in accordance with ICOMIA 28 standard (kW data).

	BF50	BF40	BF30	BF20	BF15	BF10
TYPE	OHC - 3 cylinders 6 Valve	OHC - 3 cylinders 6 Valve	OHC - 3 cylinders 6 Valve	OHC - 2 cylinders	OHC - 2 cylinders	OHC - 2 cylinders
Displacement (cc)	808	808	552	350	350	222
Bore x Stroke (mm)	70 x 70	70 x 70	61 x 63	59 x 64	59 x 64	58 x 42
Full Throttle RPM Range	5,500 - 6,000	5,000 - 6,000	5,000 - 6,000	5,000 - 6,000	4,500 - 5,500	5,000 - 6,000
Rated Power [kW (PS)]	37.3 (50)	29.8 (40)	22.3 (30)	14.9 (20)	11.1 (15)	7.4 (10)
Cooling System	Water Cooled (with Thermostat)	Water Cooled (with Thermostat)	Water Cooled (with Thermostat)	Water Cooled (with Thermostat)	Water Cooled (with Thermostat)	Water Cooled (with Thermostat)
Fuel Delivery	PGM-FI (Programmed Fuel Injection)	PGM-FI (Programmed Fuel Injection)	3 carburetors with accelerator pump	1 carburettor with accelerator pump	1 carburettor with accelerator pump	1 carburettor with accelerator pump
Ignition System	Electronic PGM-IG	Electronic PGM-IG	Electronic PGM-IG	Electronic PGM-IG	Electronic PGM-IG	Electronic PGM-IG
Starting System	Electric starter	Electric starter	Electric starter	Electric / Recoil starter	Electric / Recoil starter	Electric / Recoil starter
Exhaust System	Propeller boss	Propeller boss	Propeller boss	Propeller boss	Propeller boss	Propeller boss
Gear Ratio	2.08	2.08	2.08	2.08	2.08	2.33
Alternator Output	22A	22A	-	-	-	-
Battery Charging Capacity	17A	17A	10A	12A (Electric) / 6A (Recoil)	12A (Electric) / 6A (Recoil)	12A (Electric) / 6A (Recoil)
NMEA 2000®	Y	Y	-	-	-	-
Transom Height (mm)	L: 521	L: 521	S: 431 / L: 552	S: 433 / L: 563	S: 433 / L: 563	S: 433 / L: 563
Dry Weight (kg)	L: 98**	L: 98**	SHG: 80* / SRT: 77.5* / LHG: 82* / LRT: 79.5*	SH: 46.5* / SR: 49.5* / LH: 49.5* / LR: 51* / LRT: 58.5*	SH: 46.5* / SR: 49.5* / LH: 49.5* / LR: 51*	SH: 46.5* / SR: 49.5* / LH: 49.5* / LR: 51*
Engine Trim and Tilt	Power Trim & Tilt	Power Trim & Tilt	Gas Assist Tilt / Power Trim & Tilt	Manual - 5 stages / Power Tilt	Manual - 5 stages	Manual - 5 stages
Overall L / W / H	694 / 372 / L: 1,364	694 / 372 / L: 1,364	640 (RC) - 720 (Tiller) / 375 / S: 1,195 - L: 1,320	650 (Tiller) / 350 / S: 1,110 - L: 1,240	650 (Tiller) / 350 / S: 1,110 - L: 1,240	610 (Tiller) / 345 / S: 1,105 - L: 1,235

*BF2.3 –BF30: Weight includes propeller.

**BF40 –BF100: Weight includes aluminium propeller (3kg).

Honda outboards are tested in accordance with ICOMIA 28 standard (kW data).

	BF8	BF5	BF2.3
TYPE	OHC - 2 cylinders	OHV - 1 cylinder	OHV - 1 cylinder
Displacement (cc)	222	127	57
Bore x Stroke (mm)	58 x 42	60 x 45	45 x 36
Full Throttle RPM Range	4,500 - 5,500	4,500 - 5,500	5,000 - 6,000
Rated Power [kW (PS)]	5.9 (8)	3.7 (5)	1.7 (2.3)
Cooling System	Water Cooled (with Thermostat)	Water Cooled (with Thermostat)	Force Air Cooled
Fuel Delivery	1 carburettor with accelerator pump	1 carburettor	1 carburettor
Ignition System	Electronic PGM-IG	Electronic PGM-IG	Transistorised
Starting System	Electric / Recoil starter	Recoil	Recoil
Exhaust System	Propeller boss	Under water	-
Gear Ratio	2.33	2.08	2.42
Alternator Output	-	-	-
Battery Charging Capacity	12A (Electric) / 6A (Recoil)	- / 3A Option	-
NMEA 2000®	-	-	-
Transom Height (mm)	S: 433 / L: 563	S: 445 / L: 572	S: 418 / L: 571
Dry Weight (kg)	SH: 42* / LH: 44.5* / LR: 48.5*	S: 27* / SB: 27.5* / L: 27.5* / LB: 28*	SCH: 13.5* / LCH: 14*
Engine Trim and Tilt	Manual - 5 stages	Manual - 5 stages	Manual - 4 stages
Overall L / W / H	610 (Tiller) / 345 / S: 1,105 - L: 1,235	525 / 350 / S: 1,005 - L: 1,135	410 / 280 / S: 945 - L: 1,100

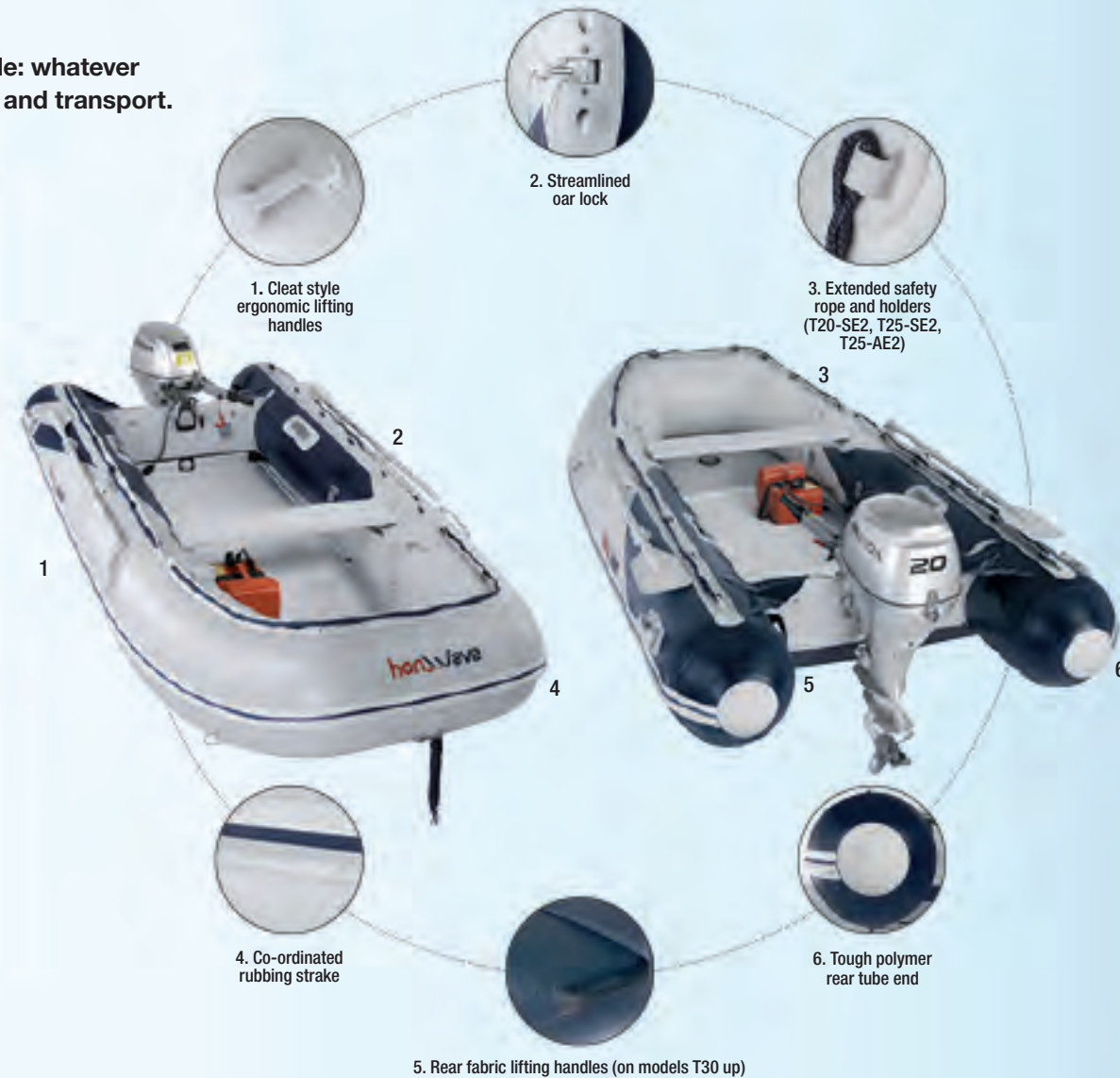
Honwave Inflatable Range

IN TUNE WITH NATURE

We have designed the Honwave inflatable range with one principle: whatever your requirements or desires, the solution is reliable, easy to use and transport. Honwave inflatable meets your needs.

FEATURES

- European manufactured PVC fabric used in the Honwave Inflatable boat range ensures:
 - High quality material
 - Durable and reliable construction
 - Lightweight
 - Excellent UV and weather resistance
 - Seawater resistance
 - Market proven reputation
- Ergonomic cleat style lifting handles provide added comfort during handling.
- Additional fabric lifting handles located at the stern ensures lifting and moving larger boats is made easier. T30AE-2, T35AE-2, T40AE-2, T32IE-2 and T38IE-2.
- Tough polymer stern tube pads provide added protection at the rear.
- Additional factory fitted seat holders provide easy seat installation and alternative seating positions. T30AE-2, T35AE-2, T40AE-2, T32IE-2 and T38IE-2.
- Fibreglass transom and seats provide long term durability against UV with increased weather resistance.
- A high capacity air pump with high pressure and deflate facility makes boat inflation/deflation less of a chore.



*6 Year warranty subject to following the service schedule.

HONWAVE SLATTED-DECK INFLATABLES

- 2 m (T20-SE2)
- 2.5 m (T25-SE2)



Safe and easy-to-use tenders; the perfect boating partners.

Compact and ultra-light, Honwave's slatted-deck inflatables are perfect for tender excursions, fishing trips or simply for cruising pleasure. With the largest buoyancy tube diameter in the market, they ensure superior flotation and stability. What's more, folding and storing can be accomplished by a single person in just minutes.

HONWAVE ALUMINIUM-DECK INFLATABLES

- 2.5 m (T25-AE2)
- 3 m (T30-AE2)



- 3.5 m (T35-AE2)
- 4 m (T40-AE2)



Geared-up ready for a challenge.

For boating enthusiasts that take fun seriously, Honwave's aluminium-deck inflatables are the ideal watercraft for just about any nautical activity. Rugged and ready to go, their extra-large buoyancy tubes guarantee smooth cruising every time. The floor slats are number coded for hassle-free assembly, and the smaller models can be stored in a single bag, so you can take them anywhere.

HONWAVE AIR V-FLOOR INFLATABLES

- 2.4 m (T24-IE2)
- 2.7 m (T27-IE2)



- 3.2 m (T32-IE2)
- 3.8 m (T38-IE2)



A revolutionary floor for a truly moving performance.

Light and fast, these inflatables are packed with comfort and performance features. Their vibration-dampening floors help smooth out the roughest rides. Their deep-V hull design significantly optimises keel performance and ensures maximum stability at virtually any speed. The hull design incorporates extended rear inflated floor trim pads, for effortless directional agility, responsive helm balance and increased buoyancy suited to 4-stroke engines.

TYPE	T20-SE2	T25-SE2
Overall Length (cm)	200	250
Overall Beam	144	156
Inner Length	121	153
Inner Beam	61	68
Tube Diameter	40	43.5
Packing Size	107 X 60 X 32	112 X 60 X 34
Net Weight (KG)	27	34
Max (hp)	4	6
Passenger Capacity (Adult/Child)	2/-	3/-
Loaded Weight	250	440
Chambers	3	3
Floor	Slatted	Slatted
Category	-	C

TYPE	T25-AE2	T30-AE2	T35-AE2	T40-AE2
Overall Length (cm)	250	297	353	395
Overall Beam	156	157	170.5	189
Inner Length	153	195.5	244	279
Inner Beam	68	68	80.5	90
Tube Diameter	43.5	43	45	49
Packing Size	112 X 65 X 38	112 X 65 X 38	122 X 72 X 43	129 X 79 X 45
Net Weight (KG)	45	54	73	86
Max (hp)	6	15	20	30
Passenger Capacity (Adult/Child)	3/-	4/-	5/-	7/-
Loaded Weight	440	610	700	1050
Chambers	3 + Keel	3 + Keel	3 + Keel	3 + Keel
Floor	Aluminium	Aluminium	Aluminium	Aluminium
Category	C	C	C	C

TYPE	T24-IE2	T27-IE2	T32-IE2	T38-IE2
Overall Length (cm)	240	267	320.5	376
Overall Beam	154	153	153.5	170
Inner Length	148	177	229	262
Inner Beam	67	67.5	67.5	80
Tube Diameter	42.5	42.5	42.5	44
Packing Size	112 X 60 X 34	112 X 65 X 38	112 X 65 X 38	122 X 72 X 43
Net Weight (KG)	33	34	39	48
Max (hp)	6	8	15	25
Passenger Capacity (Adult/Child)	3/-	3/1	4/-	5/1
Loaded Weight	400	664	735	950
Chambers	3 + Floor (2)	3 + Floor (2)	3 + Floor (2)	3 + Floor (2)
Floor	Air V-floor	Air V-floor	Air V-floor	Air V-floor
Category	-	C	C	C



The World of Honda Power Equipment

For years, we've built our Power Equipment range around our clean Honda 4-stroke engine technology. That's because we're committed to making our products as user-friendly, fuel-efficient and reliable as we can – all without compromising performance. Class-leading 4-stroke principles still drive many of our products, but we're always pushing the boundaries with innovative newcomers like Miimo, our battery-powered robotic lawnmower that, between brief charges from your electrical supply, can be programmed to run anytime, 24 hours a day, seven days a week.

At Honda, we've harnessed our design and technology expertise to create a versatile repertoire of power products from generators, water pumps and tillers to marine engines, inflatable boats and snow throwers. Take a look around the World of Honda and discover how our Power Equipment range is specially engineered to fit in with the life you lead.

Explore the wide range of Honda products at www.honda.co.uk or call 0845 200 8000. (Charged at local rates from landlines).



FREE RYA Level 2 Powerboat Training

with every new Honda BF50 or larger engine.



As the leading manufacturer of high performance 4-stroke engines on the water, Honda are firmly committed to promoting a safer and cleaner marine experience.

Our passion for innovation means you can be sure all our engines incorporate a host of safety and security features, designed to ensure you enjoy your adventures on the water in complete confidence.

To ensure that you get the very best out of your engine and boat, we are the only engine manufacturer to offer free RYA Level 2 Powerboat training to any person purchasing a BF50 engine or above.

The two-day course provides the skills and background knowledge needed to drive a powerboat and is the basis of the International Certificate of Competence.

It includes close quarters handling, high speed manoeuvres, man overboard recovery and collision regulations.

To take advantage of this complimentary package, speak your Honda Marine Authorised Dealer.

